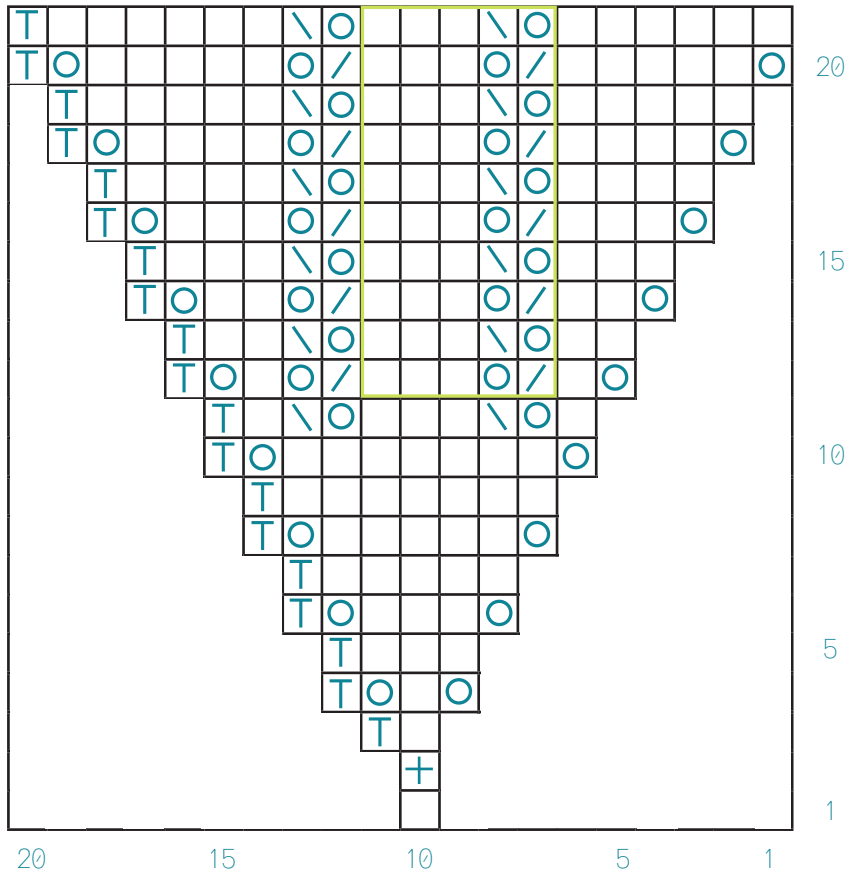


CHART A



NOTE: If viewing this page as a .pdf, make sure it is displayed at no less than 100%.

KEY

- | Slip stitch
- T Knit through back loop
- + Knit front and back
- / k2tog
- \ ssk
- ./ K2tog (1 edge stitch & 1 blanket stitch)
- YO
- BO
- Knit
- ◻ Repeated Section

CHART B

